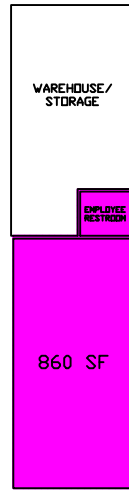
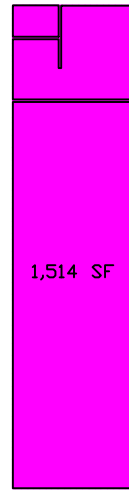




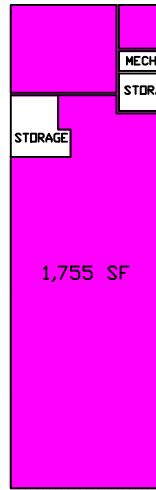
ACE HARDWARE



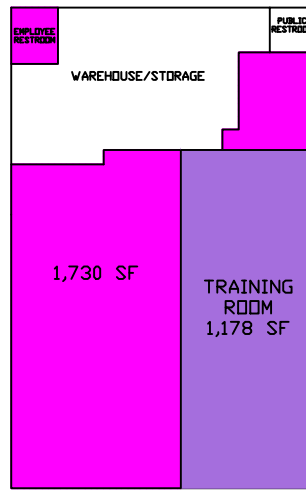
DPC
OFFICE



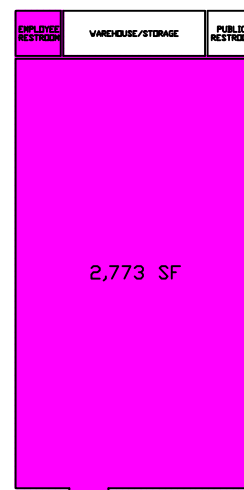
PEAK
PERFORMANCE



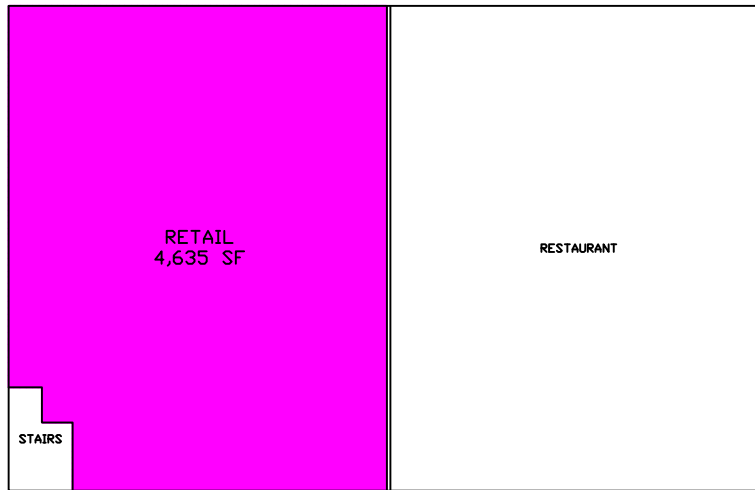
R&M
DESIGNS



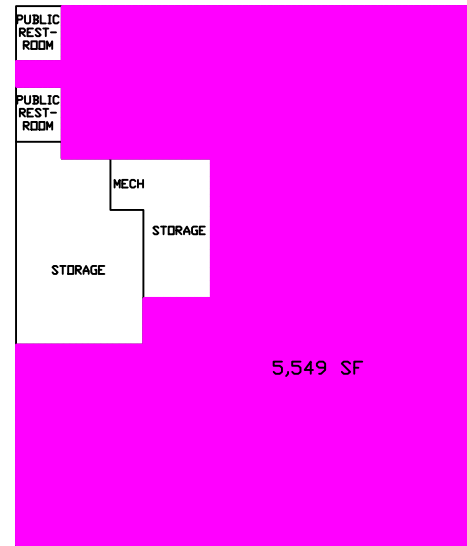
FLEET FEET



SHOE STOP



SPECIALTY RETAIL



FEDEX OFFICE



DESPERES COMMONS
11769 MANCHESTER ROAD
ST. LOUIS, MO



NORTH

DATE: 04/04/2017

NOTES

1. THESE DRAWINGS ARE NOT TO BE USED FOR CONSTRUCTION PURPOSES. EVERY APPROPRIATE EFFORT TO ASSURE THE ACCURACY OF THESE DOCUMENTS HAS BEEN MADE, BUT THERE IS NO GUARANTEE THAT THESE DOCUMENTS CONTAIN COMPLETE AND ACCURATE INFORMATION. ANY USE OF THIS DOCUMENT IS AT THE RECEIVERS OWN RISK.
2. THE SPACES WERE OCCUPIED AT THE TIME OF THE SURVEY. SOME AREAS COULD NOT BE ACCESSED DUE TO STORE DISPLAYS OR STORED MATERIALS.
3. THIS SQUARE FOOTAGE CALCULATION IS DERIVED FROM MEASUREMENT TO FACE OF INTERIOR WALLS WITHIN THE HIGHLIGHTED BOUNDARIES ONLY AND IS INTENDED FOR MATERIAL TAKE-OFFS ONLY.

GROSS SQUARE FOOTAGE